

WATTWORKS

Game Rules

Welcome to WATTWORKS!

This interactive card game helps you and your team take step-by-step action to build a successful energy community. Whether you're just getting started or already working with a group of enthusiastic people, WATTWORKS guides you through the different stages of setting up and growing your initiative.

How does WATTWORKS work?

WATTWORKS consists of a set of cards in three different colours. Each colour matches a specific phase in the development of your energy community.

Phase 1: Awareness

For individuals who are just starting out and want to take their first steps towards sustainable energy.

Phase 2: Exploring Renewable Energy Opportunities

For groups that are already formed and want to explore how they can develop renewable energy initiatives together.

Phase 3: Collaboration

For communities that already have an idea or direction and are ready to turn their plans into action.

Each card contains a reflective or strategic question designed to help you think more deeply about key aspects of your ideas. Some questions link to additional tools or explanations that can support your process — simply scan the QR code on the card to explore more online.

The questions in each phase follow a logical structure and are grouped by theme. However, you don't need to go through every single question — just pick what's most relevant to your situation.

Interreg  Co-funded by
the European Union
North-West Europe
CIRCUS



CIRCUS

Connecting Initiatives for Rural Communities,
Upscaling their Sustainable energy



How to use the game:

1) Choose your phase:

Pick the colour of cards that best matches your current situation.

2) Draw a card:

Read the question out loud and discuss it with your group. You can do this with or without the support of a CIRCUS trainer to guide the conversation.

3) Reflect and discuss:

Use the question as a starting point for an open and honest dialogue.

4) Explore extra resources:

Some cards link to useful tools to support your next steps. You'll find these tools in the appendix at the back of the card deck.

We also provide extra methods you can use freely, depending on your needs. The instructions for these methods are available on our website.

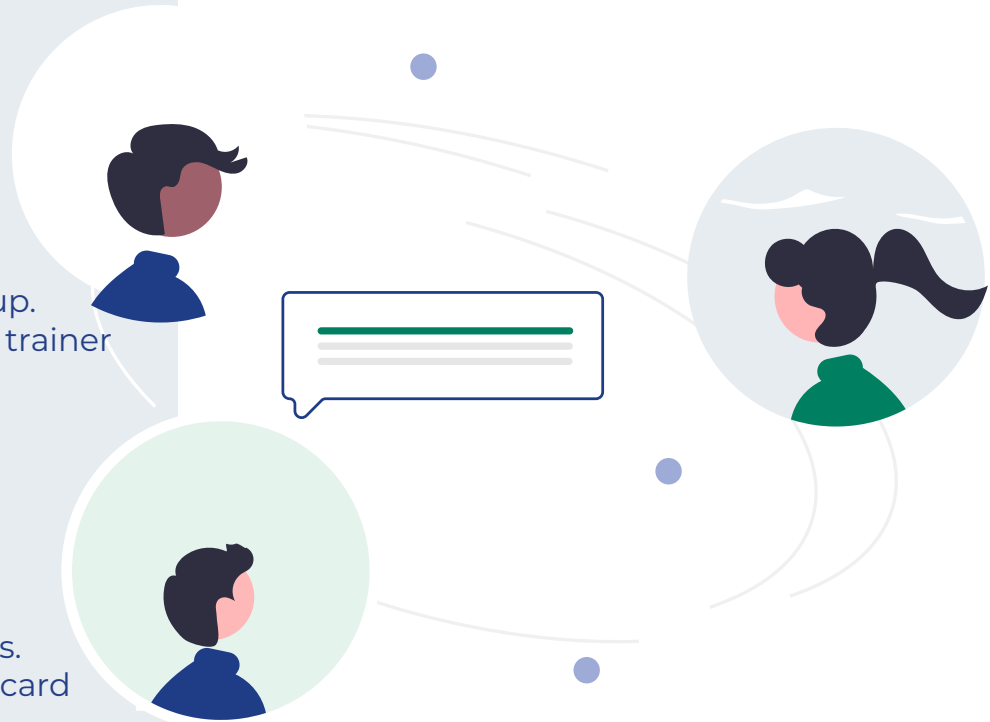
Scan the QR code or visit: circus.nweurope.eu/tools

5) Write down your insights:

Keep track of key points or decisions so you can refer back to them later.

6) Move on to the next phase:

Once you feel you've tackled the questions and challenges of your current phase, you can move on to the next set of cards. This helps you grow step by step and continue developing your energy community.



Where and when to use WATTWORKS?

This game is designed to be played in a group setting, such as:

- During meetings
- In workshops
- In informal team conversations

By asking the right questions at the right time, you lay a strong foundation for your energy community and increase your chances of long-term success.

Grab the cards, start the conversation, and build a sustainable future together!

Good luck and most of all, enjoy playing WATTWORKS!